

iOS (Apple) Device Swap Process

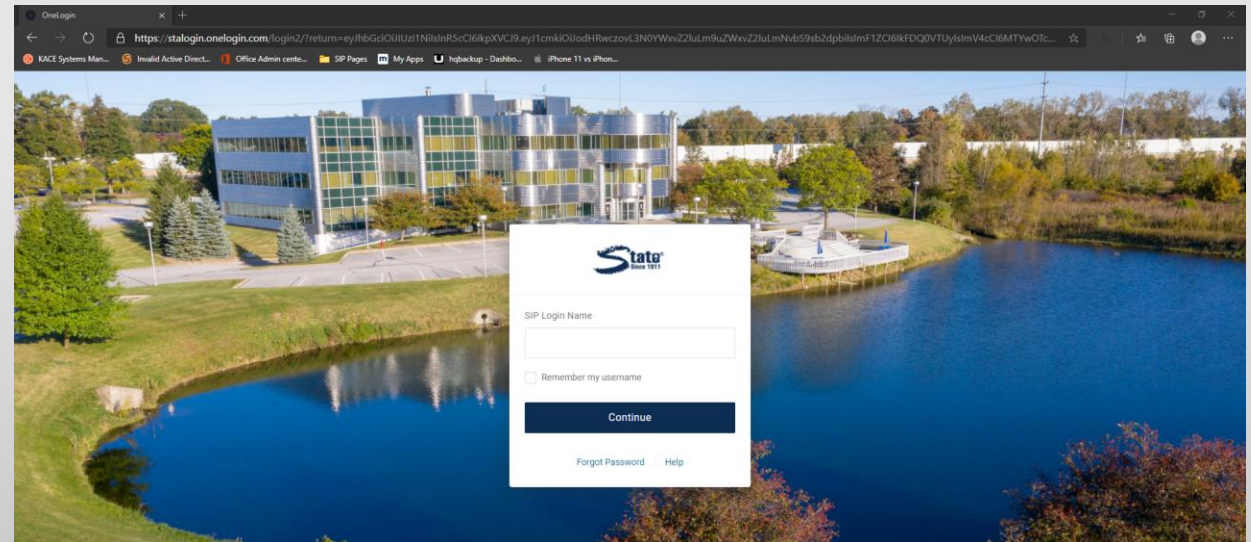
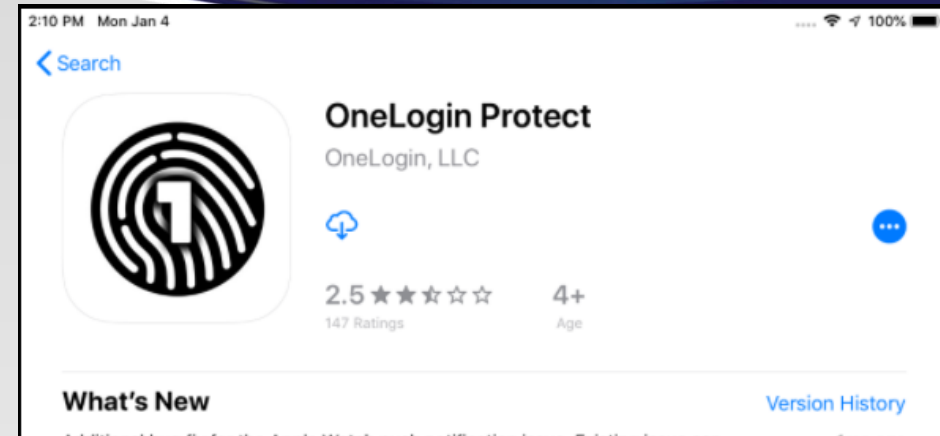
Last Updated: 8/6/2025

- Welcome to the iOS Device Swap Process guide.
- Please be aware that your iOS(Apple) device needs to be on iOS 16.0 or higher.
- We will Outline:
 - Swapping your OneLogin Protect App from old to new device.
 - Removing MaaS 360 before setting up new device.
- If you encounter any issues, please stop and reach out to State Industrial Support.

OneLogin Protect App Process

OneLogin Protect App Process

1. Download the OneLogin Protect App on your new device.
2. Once Downloaded, use a different device (your old device or a computer) and open a web browser.
3. Login to stalogin.onelogin.com
 - **Note:** You may need your old device to approve authentication into the site.



OneLogin Protect App Process

- Once logged in, go to the top right corner where your name is and choose “PROFILE”.
- Once under “PROFILE”, go to “SECURITY FACTORS”.
- Here you will “ADD FACTOR”.

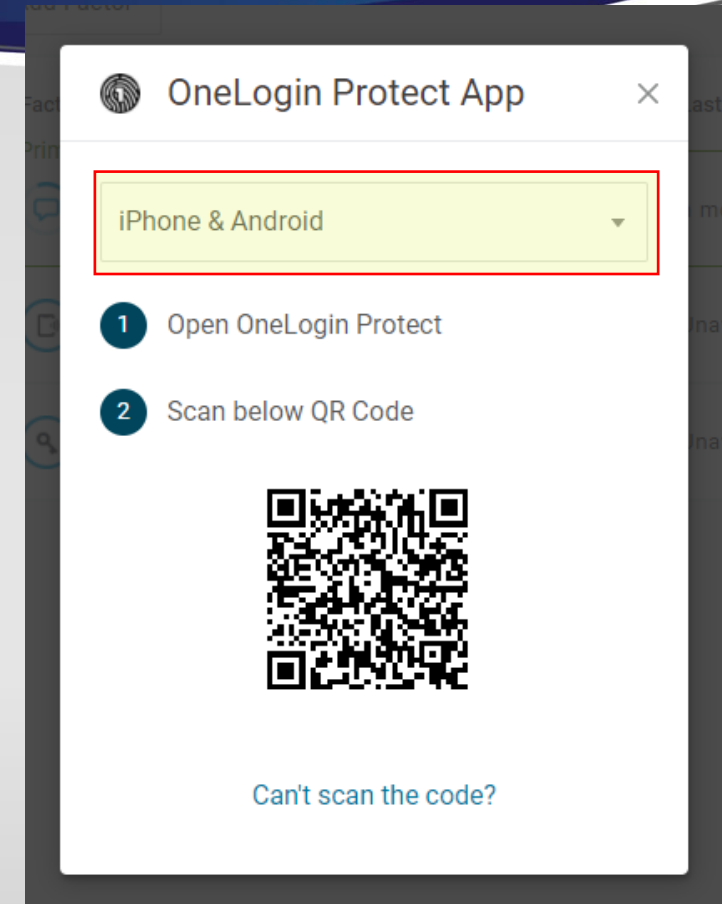
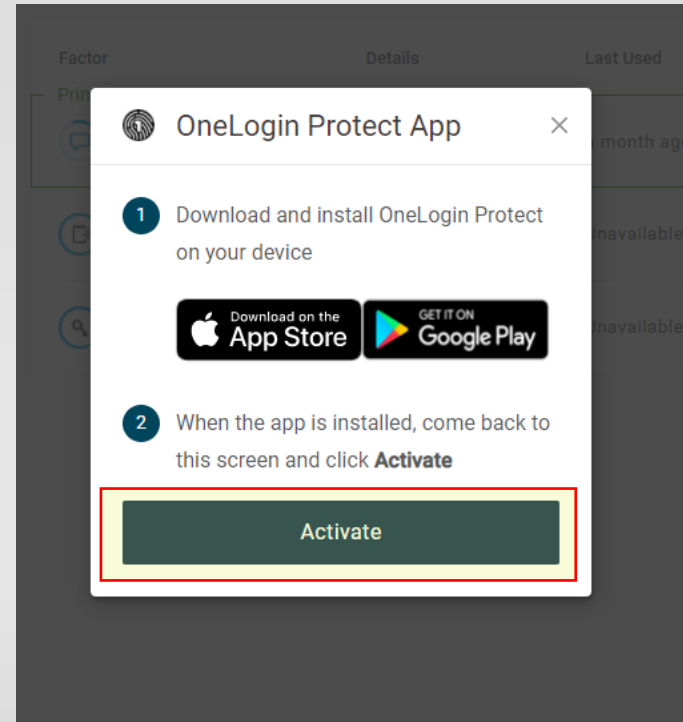
The first screenshot shows the OneLogin portal interface. In the top right corner, the user's name 'MC Michael' is displayed. A red arrow points to this name, and a dropdown menu is open, showing the 'Profile' option highlighted with a red box. The browser address bar shows 'https://stalopin.onelogin.com/portal/'.

The second screenshot shows the 'Profile' page. On the left sidebar, the 'Security Factors' option is highlighted with a red box. The main content area is titled 'Security Factors' and includes a description: 'Manage security factors to verify your identity when you sign in or reset your password.' Below this, there is an 'Add Factor' button with a red arrow pointing to it. A table lists the current security factors:

Factor	Details	Last Used	Used For
Primary	OneLogin Protect App	5 hours ago	Options

OneLogin Protect App Process

7. A pop-up window will appear for you to add a factor for the OneLogin Protect App.
8. Since you have the App installed already, click “ACTIVATE”.
9. Next, make sure you have iPhone & Android selected in the dropdown and use the App to “ADD ACCOUNT” on your new device to scan the QR Code.

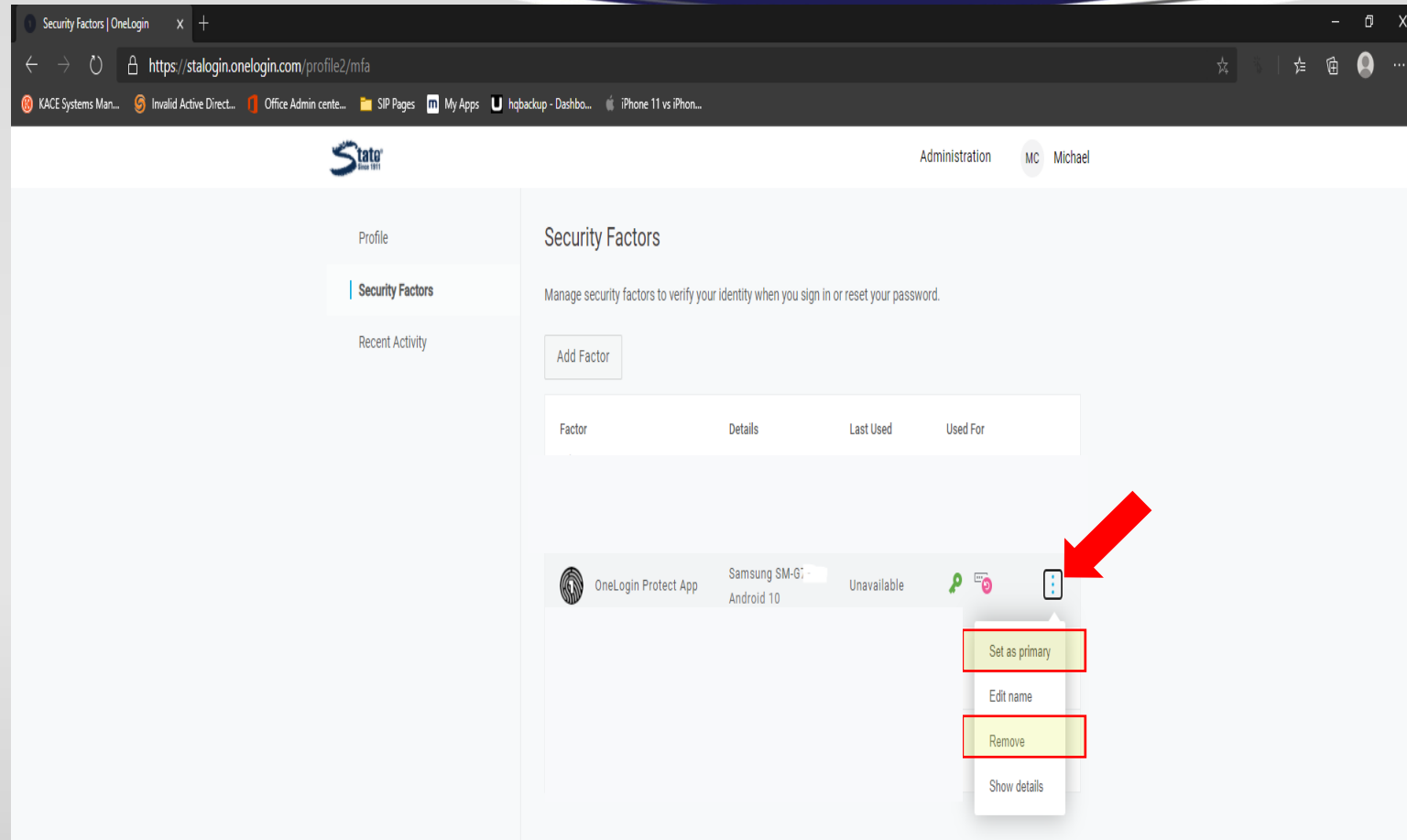


OneLogin Protect App Process

10. Once completed, you will see StaLogin listed in the app on your New Mobile Device.

11. Go back to StaLogin on your Browser (you opened in step 3).

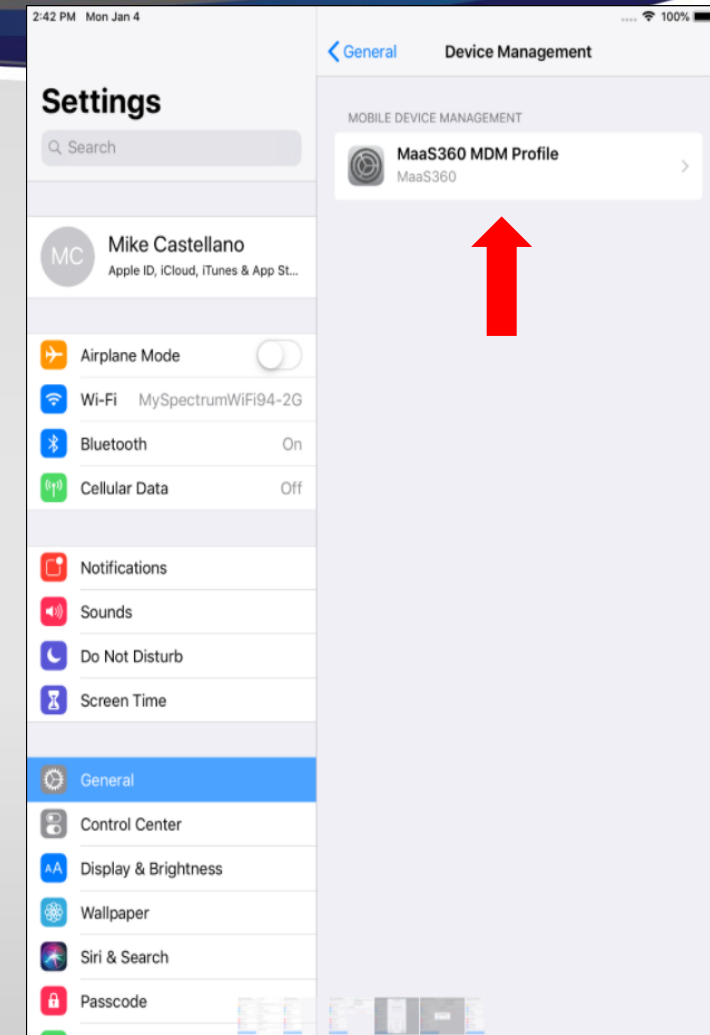
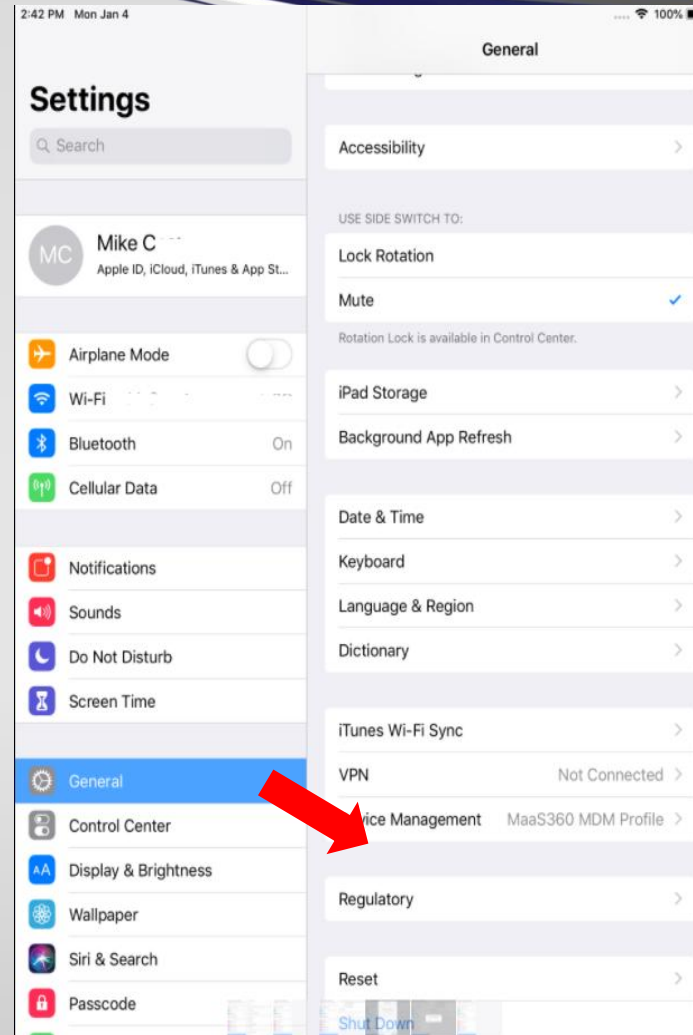
- Go to your new connection and “SET AS PRIMARY”.
- OPTIONAL: Go to the **old** connection and “REMOVE”.



Removing MaaS 360 from old Device

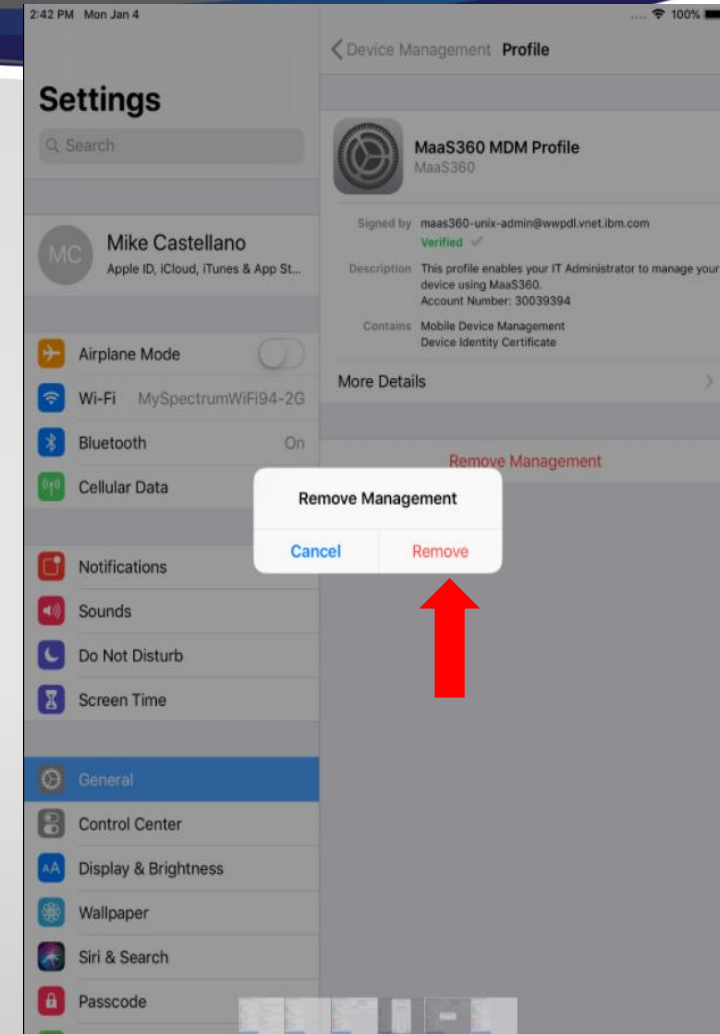
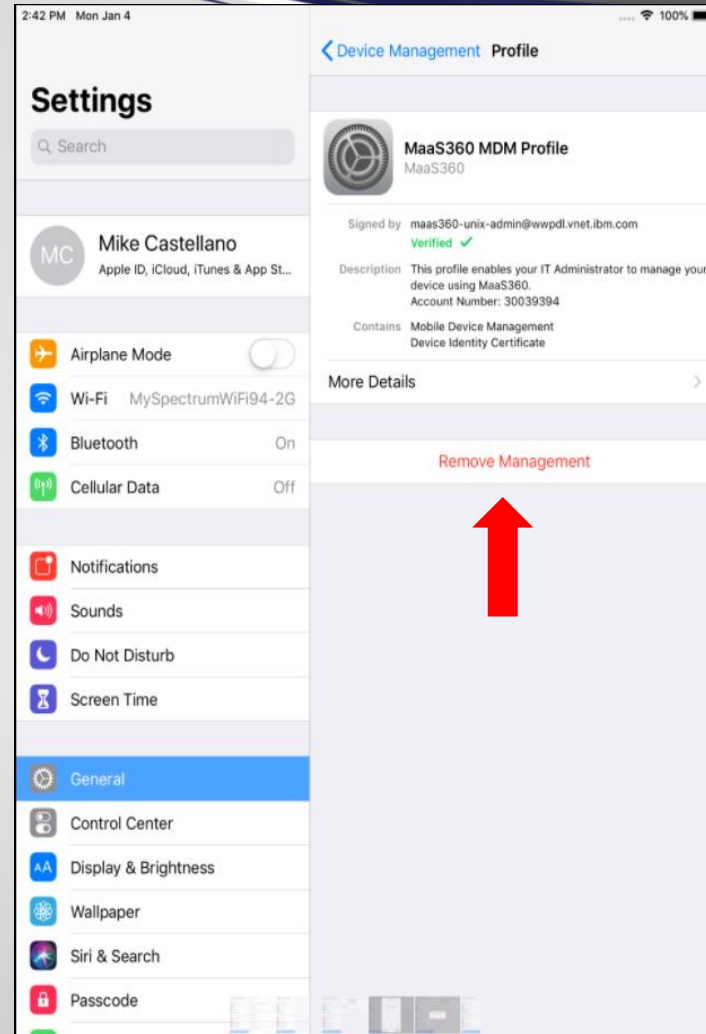
Removing MaaS 360 Process

1. Go to Settings, then General
2. Go to VPN & Device Management and click on MaaS360 MDM Profile.



Removing MaaS 360 Process

4. On the next screen, click on Remove Management.
5. You may be prompted to enter your device PIN.
6. When prompted, click “REMOVE”.
7. Once processed you will see there are no profiles listed.



To enroll your new device please use the iOS
Enrollment Guide Linked here: